



O'Gorman & Partners



24/88 Bent Street Neutral Bay NSW

1  1 

Perched on the 5th floor, this neat and functional studio apartment is designed to take full advantage of its breathtaking panoramic aspect across the city skyline, Harbour Bridge and district canopy. Featuring updated interiors, this idyllic apartment offers comfort, privacy as well as convenience to Neutral Bay shops and city transport.

View : <https://www.ogpartners.com.au/lease/nsw/north-s-hore-lower/neutral-bay/residential/studio/6211220>

Features:

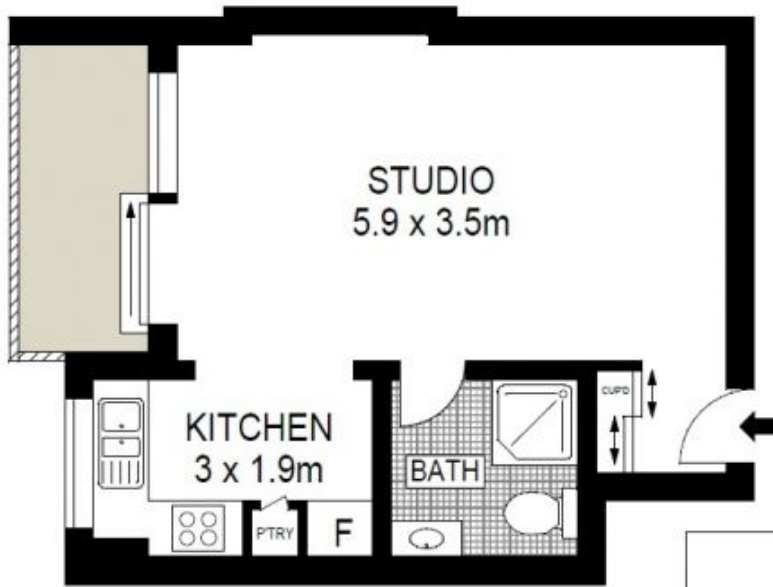
- * Secure block, level lift access from car space
- * Living space flows onto a charming balcony
- * Updated kitchen with stainless steel appliances
- * Neat and fresh white tiled bathroom with shower
- * Sought-after car space to accommodate one vehicle
- * Just meters from Forsyth Park & Neutral Bay Village
- * Situated within an easy walk to North Sydney and the



James Dorrin
+61 2 9968 4444

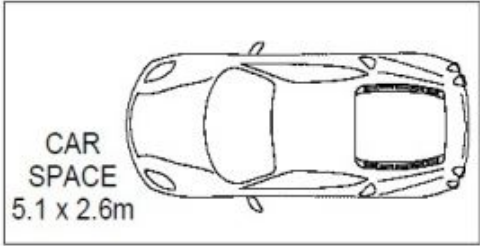


Anthony O'Gorman
+61 2 9968 4444



**O'GORMAN
& PARTNERS**

LEVEL FIVE



Scale in metres. Indicative only. Dimensions are approximate. All information contained herein is gathered from sources we believe to be reliable. However we cannot guarantee its accuracy and interested persons should rely on their own enquiries.



24/88 Bent Street, Neutral Bay