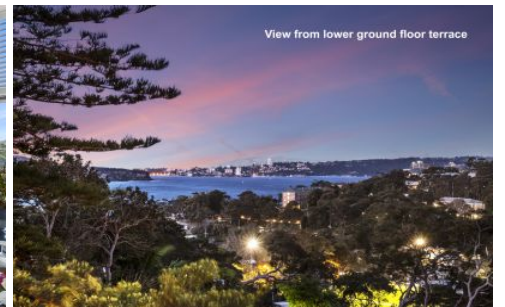


O'Gorman & Partners



5 Beaconsfield Road Mosman NSW

5 3 2

Poised perfectly atop the exclusive Balmoral slopes with panoramic views over leafy parkland to the harbour and Manly, this superbly designed residence provides a readymade family haven with optional scope to flaunt your designer flair and add value. Showcasing multiple living spaces, modern finishes and vast northeast harbour-view terraces extending from both floors, its exclusive address is within a four minute stroll of Balmoral Beach and a relatively level five minute walk to Mosman Village.

Features:

- Vast living and dining rooms, two way open fireplace
- Lounge room with fireplace, fitted home office
- Large granite kitchen with gas stove and dishwasher
- Spacious bedrooms with built-ins, main with ensuite
- Stylish bathrooms, ducted air conditioning, alarm

Price : Auction

View : <https://www.ogpartners.com.au/sale/nsw/north-s-hore-lower/mosman/residential/house/6498514>

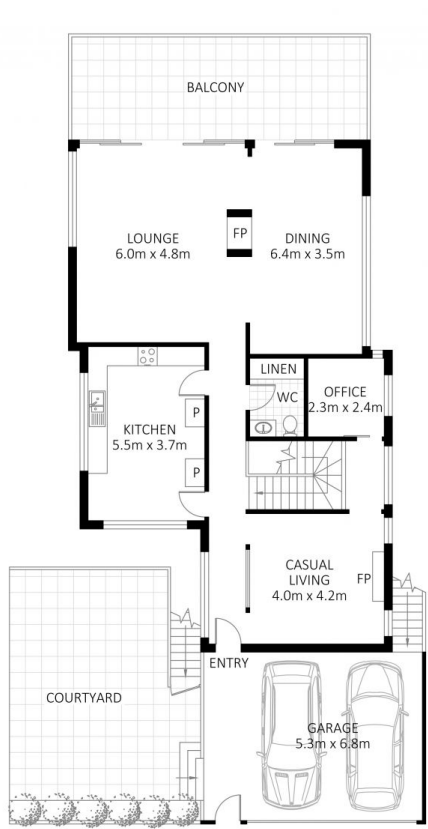


Anthony O'Gorman
+61 2 9968 4444

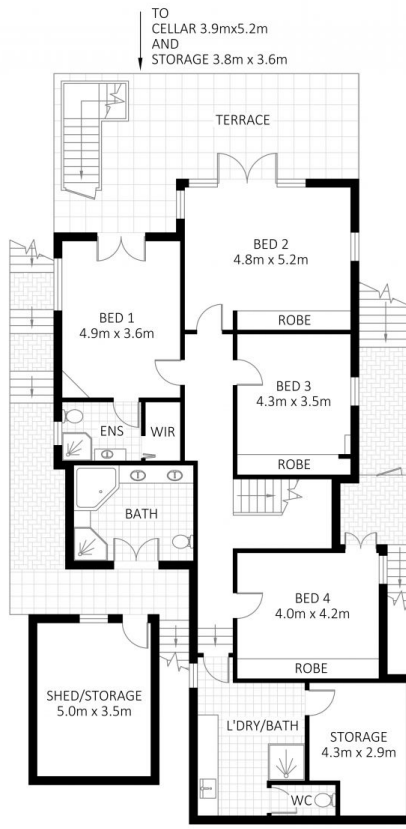


Megan Thomas
+61 2 9968 4444

<https://www.ogpartners.com.au>



GROUND FLOOR



LOWER GROUND FLOOR



SITE PLAN

5 Beaconsfield Road, Mosman

Scale in metres. Indicative only. Dimensions are approximate. All information contained here is gathered from sources we believe to be reliable. However, we cannot guarantee its accuracy and interested persons should rely on their own enquiries.

INTERNAL FLOOR AREA 323m²

O'Gorman
& Partners