

O'Gorman & Partners



6 Delecta Avenue Mosman NSW

5 🏠 4 🚗 2 🚘

Set in a secluded waterfront cul-de-sac with a perfect Northerly aspect, this Heather Buttrose designed home sits in perfect harmony with nature's beauty and huge never-to-be-built-out water views.

Price : Contact Agent

View : <https://www.ogpartners.com.au/sale/nsw/north-s-hore-lower/mosman/residential/house/6536059>

Graced with fluid open-plan interiors and extensive use of glass to maximise the outlook, it soaks up every bit of sunlight and intimate Middle Harbour views from all levels.

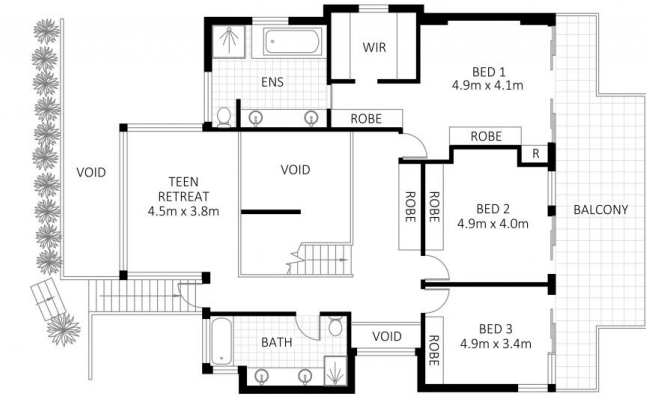
It accommodates 5 bedrooms with built-in and 4 bathrooms including a master suite with walk-in robe and spa ensuite and terrace. Warmed by an open fire, the glass-embraced living and dining space opens to a huge terrace. At its heart is a contemporary black granite gas kitchen with breakfast bar and twin ovens.



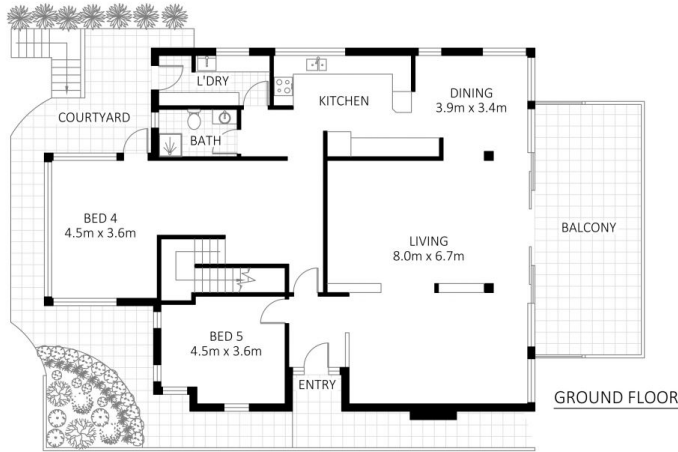
Megan Thomas
+61 2 9968 4444

A spacious family room provides the perfect retreat for the

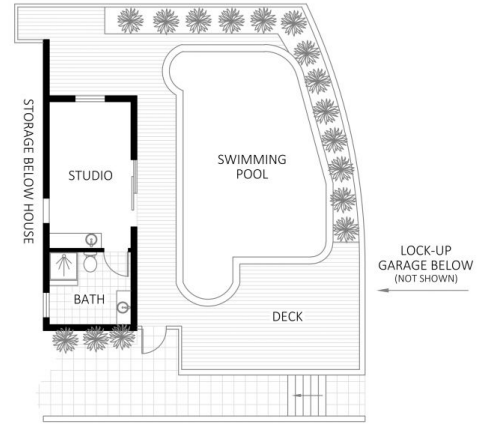
<https://www.ogpartners.com.au>



FIRST FLOOR



GROUND FLOOR



AT THE FRONT



6 Delecta Avenue, Mosman

Scale in metres. Indicative only. Dimensions are approximate. All information contained here is gathered from sources we believe to be reliable. However, we cannot guarantee its accuracy and interested persons should rely on their own enquiries.

INTERNAL FLOOR AREA APPROX 311m²
 BALCONIES AREA APPROX 60m²
 TOTAL AREA APPROX 371m²

**O'Gorman
& Partners**